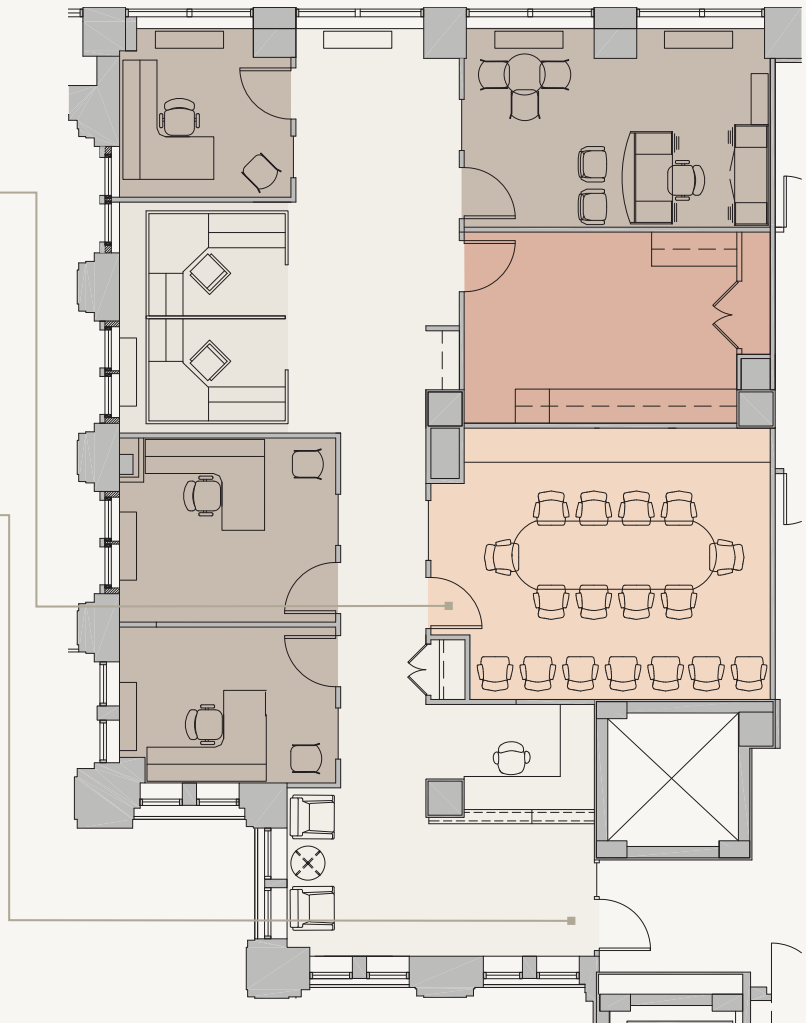
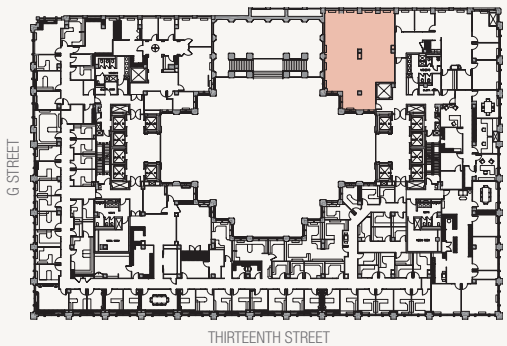


# THE HOMER BUILDING

## THIRD FLOOR SPEC SUITE (SOUTH)

2,444 SF | Available Immediately | 3–10 Years

- ⊗ Atrium window line
- ⊗ Reception and pantry
- ⊗ Four windowed offices with space for two work stations
- ⊗ 10-person conference room



■ Office   ■ Work Stations   ■ Work Room   ■ Meeting Room



THE HOMER BUILDING | 601 THIRTEENTH STREET, NW  
 WIL PACE | 202.624.8649 | WPACE@AKRIDGE.COM  
 TIM MCCARTY | 202.207.3949 | TMCCARTY@AKRIDGE.COM

