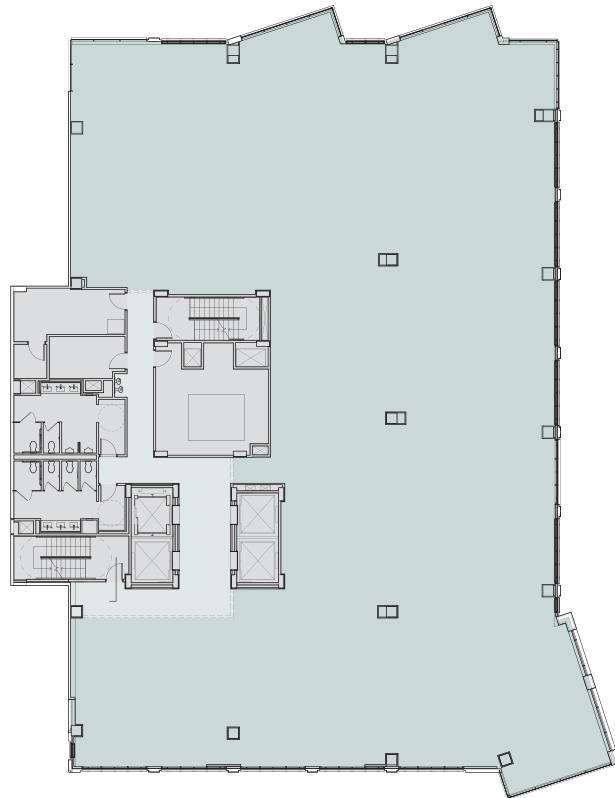


# EIGHTH FLOOR

## 1201 HALF

### 14,788 SQUARE FEET OFFICE SPACE

- + Floor-to-ceiling glass
- + 9' finished ceiling height
- + Glass on three occupied sides
- + 9' cantilevers into public space

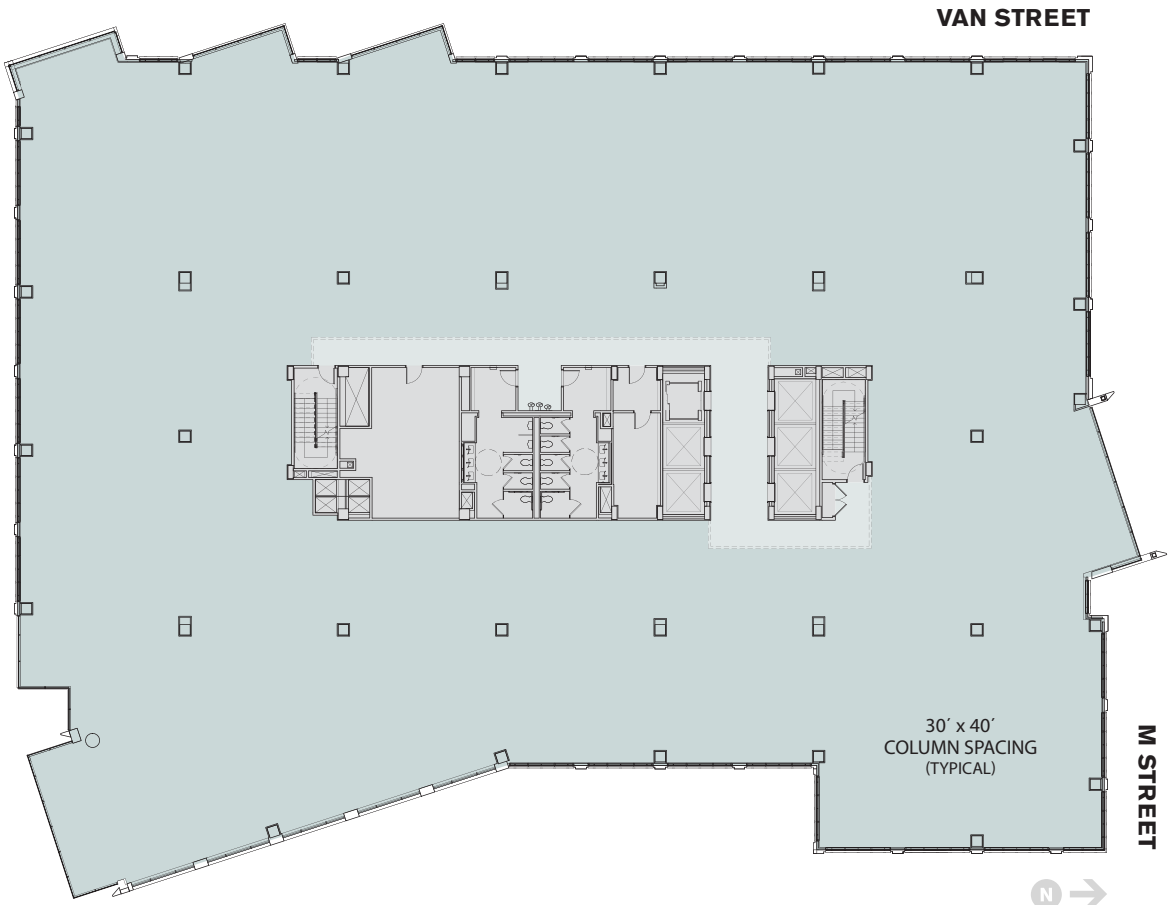


HALF STREET

## 25M

### 30,712 SQUARE FEET OFFICE SPACE

- + Floor-to-ceiling glass
- + 9' finished ceiling height
- + Glass on all four sides
- + Up to 11' cantilevers into public space



VAN STREET

M STREET



## Akridge

Leasing Opportunities: Ben Meisel  
202.624.8605 | [bmeisel@akridge.com](mailto:bmeisel@akridge.com)

- OFFICE SPACE
- BUILDING CORE