

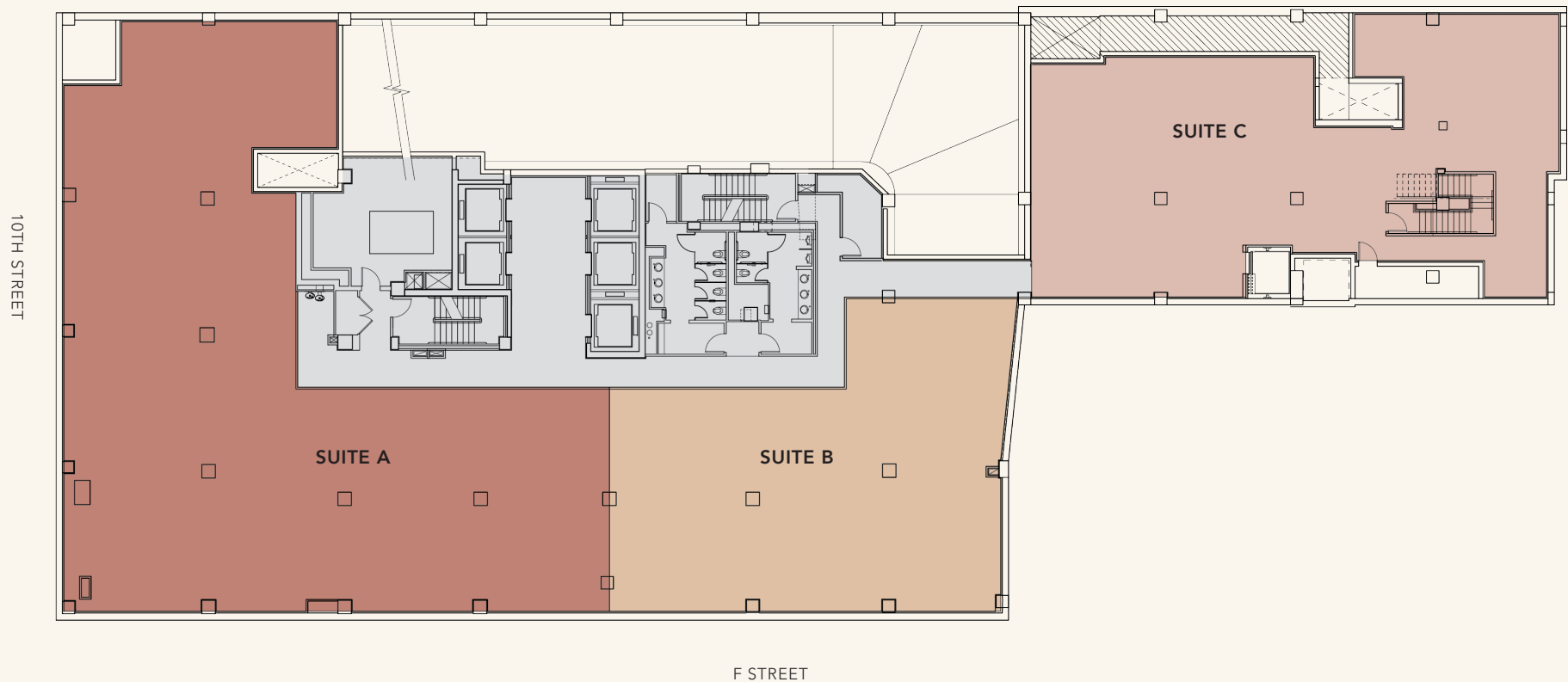
CARROLL SQUARE

CONCOURSE LEVEL

Suite A: 7,341 square feet | **Available:** Immediately | **Term:** 3–10 years | Suites A and B can be combined.

Suite B: 3,661 square feet | **Available:** Immediately | **Term:** 3–10 years | Can be stacked with retail level above.

Suite C: 4,176 square feet | **Available:** Immediately | **Term:** 3–10 years



CARROLL SQUARE | 975 F STREET, NW

Wil Pace | 202.624.8649 | wpace@Akridge.com

Mckay Elliott | 202.207.3932 | melliott@Akridge.com

AKRIDGE
Invested.