

1700

PENNSYLVANIA

THE MILLS BUILDING



FIFTH FLOOR

SQUARE FEET

4,634 SF

RATE

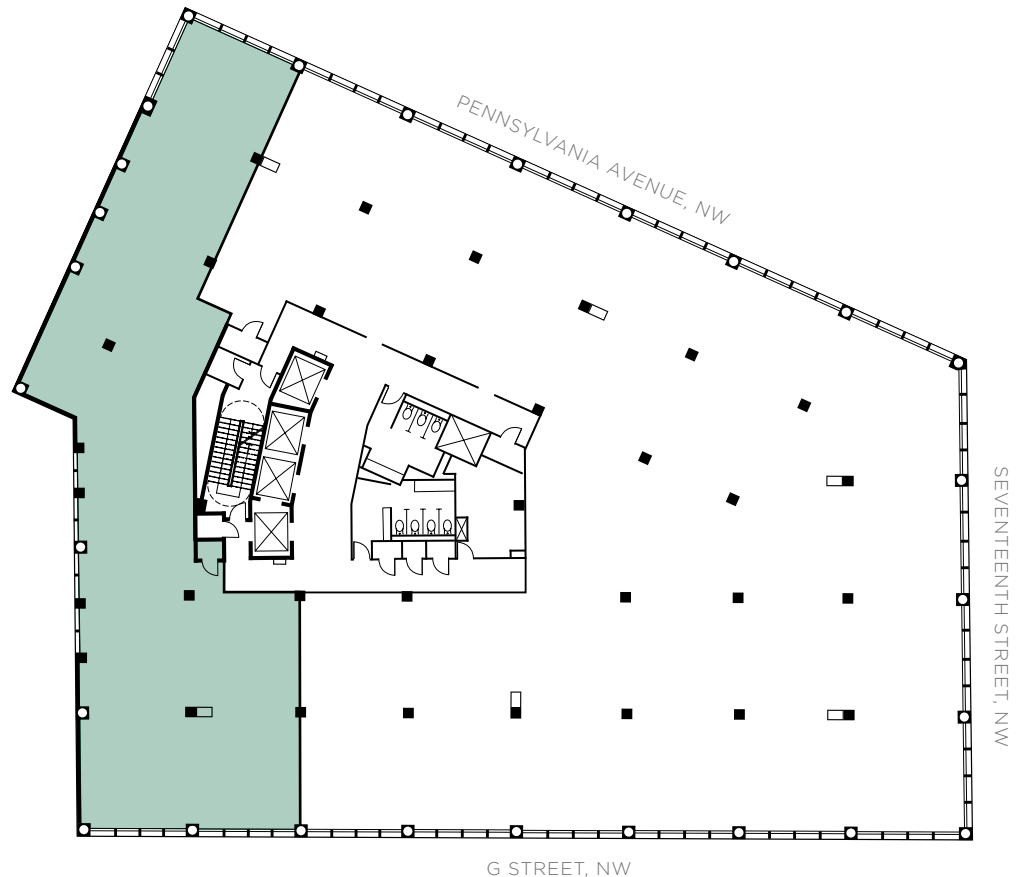
\$ 55.00 full service

AVAILABILITY

Available immediately

KEY AMENITIES

- + Rooftop terrace
- + Two blocks from Metro
- + Award-winning Akridge property management
- + On-site dining
- + Three-level parking garage
- + Spectacular Federal City views



■ Available